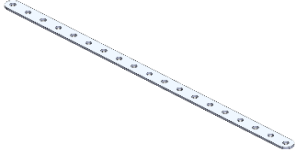
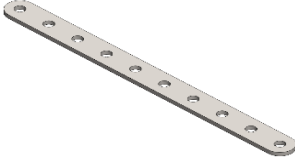
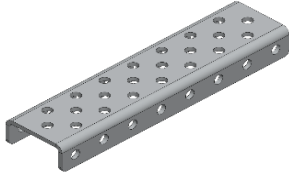
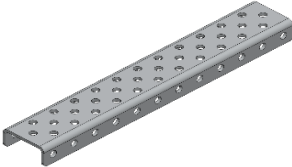
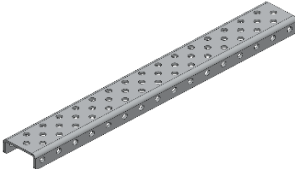
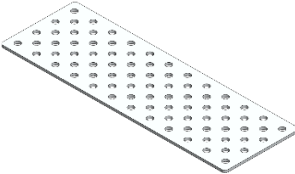
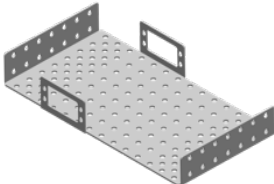
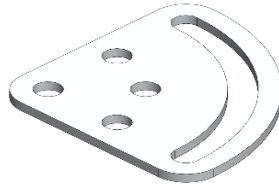


Description	Picture	# in 2026 Kit	Bendable
<b>KIPR Metal</b>			
Strap 1 x 19		4	Yes
Strap 1 x 10		6	Yes
Channel 3 x 8		3	No
Channel 3 x 12		2	No
Channel 3 x 16		1	No
Plate 4 x 12		4	Yes
Chassis		2	No

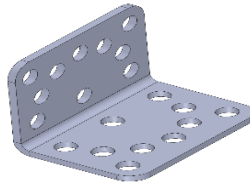
D Bracket



1

No

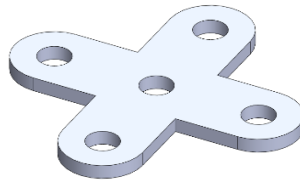
Angle Bracket



2

No

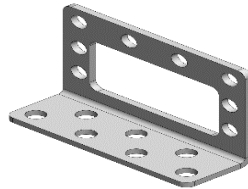
Plus Plate



1

Yes

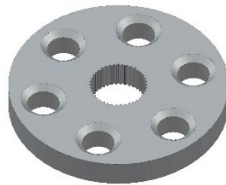
Servo Bracket



8

No

Round Servo Horn



2

No

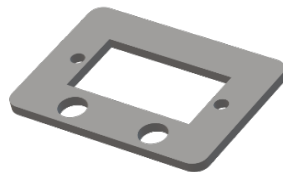
1 x 5 Servo Horn



4

No

Micro Servo Mount




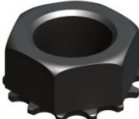
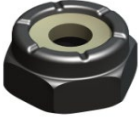






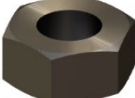


2

No

## Screws, Nuts, and Standoffs

---

Screw 8-32 x 1/4" (black)		40
Screw 8-32 x 1/2" (black)		90
Screw 8-32 x 3/4" (black)		70
Nut 8-32 Keps (black)		170
Nut 8-32 Nylock (black)		30
Standoff 8-32 x 1/2"		12
Standoff 8-32 x 1"		7
Standoff 8-32 x 2"		2
Standoff 8-32 x 3"		1
Short Silver Servo Horn Screw (M3)		6
18-8 Washer		6
Silver Servo Horn Nut (M3)		10

Silver Servo Horn Machine  
Screw (M3)



10

Threaded Rod  
8-32 x 1"



10

Threaded Rod  
8-32 x 2"



2

Threaded Rod  
8-32 x 3"



2

Threaded Rod  
8-32 x 6"



1

Brass Screws



10

2-56 1" Caster Screw



5

2-56 3/8" Micro Servo  
Mount Screw



6

M3 x 0.5" x 6" Mecanum  
Wheel Screw



6

## MISC.

---

Caster



2

Screwdriver  
(not useable on robot)



1

11/32" Wrench  
(not useable on robot)



1