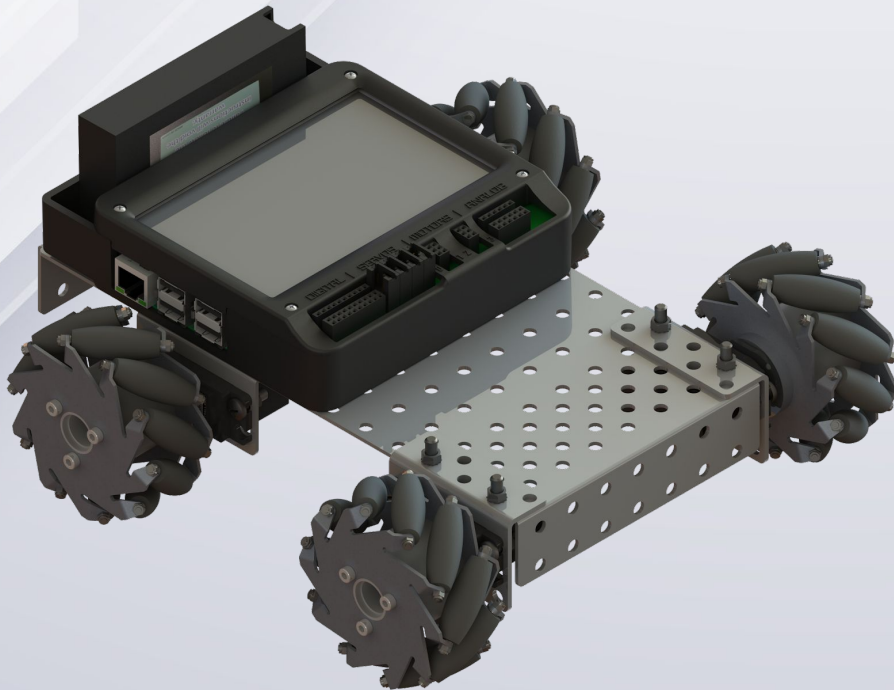
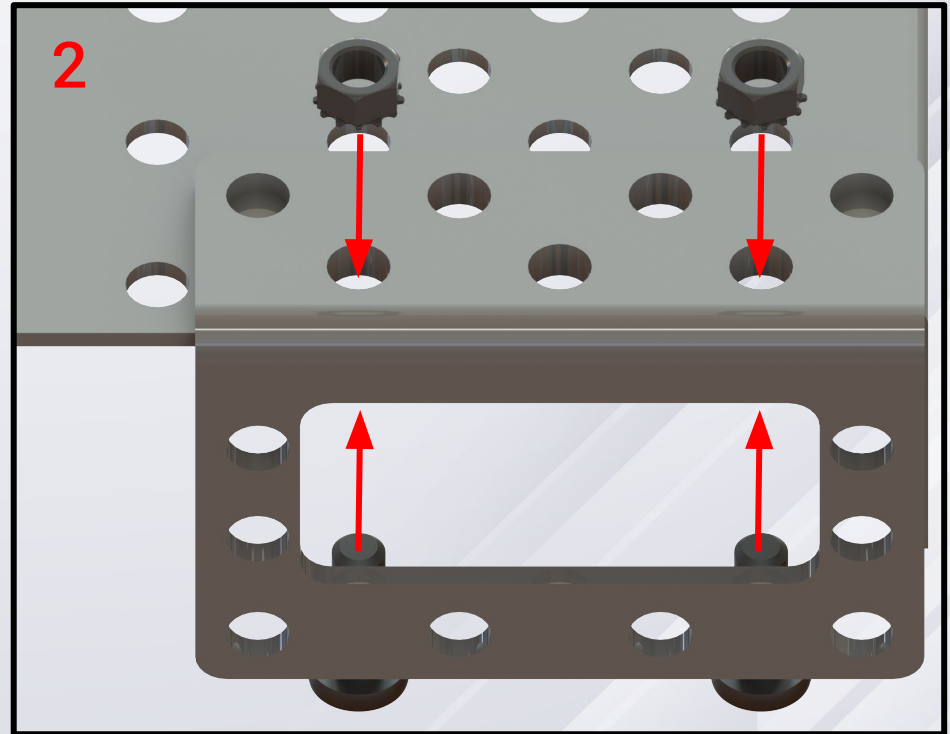
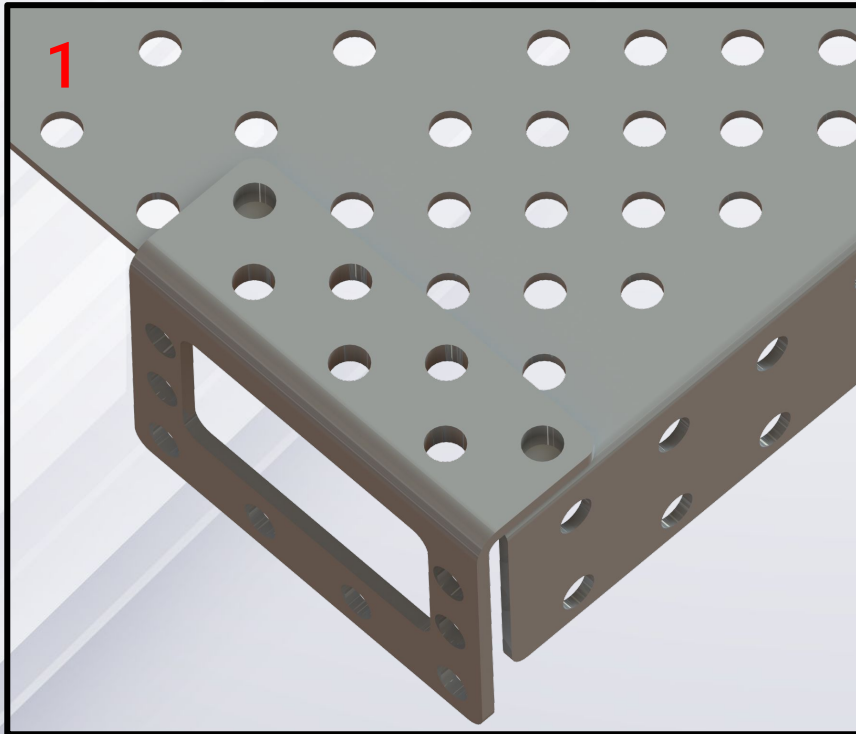


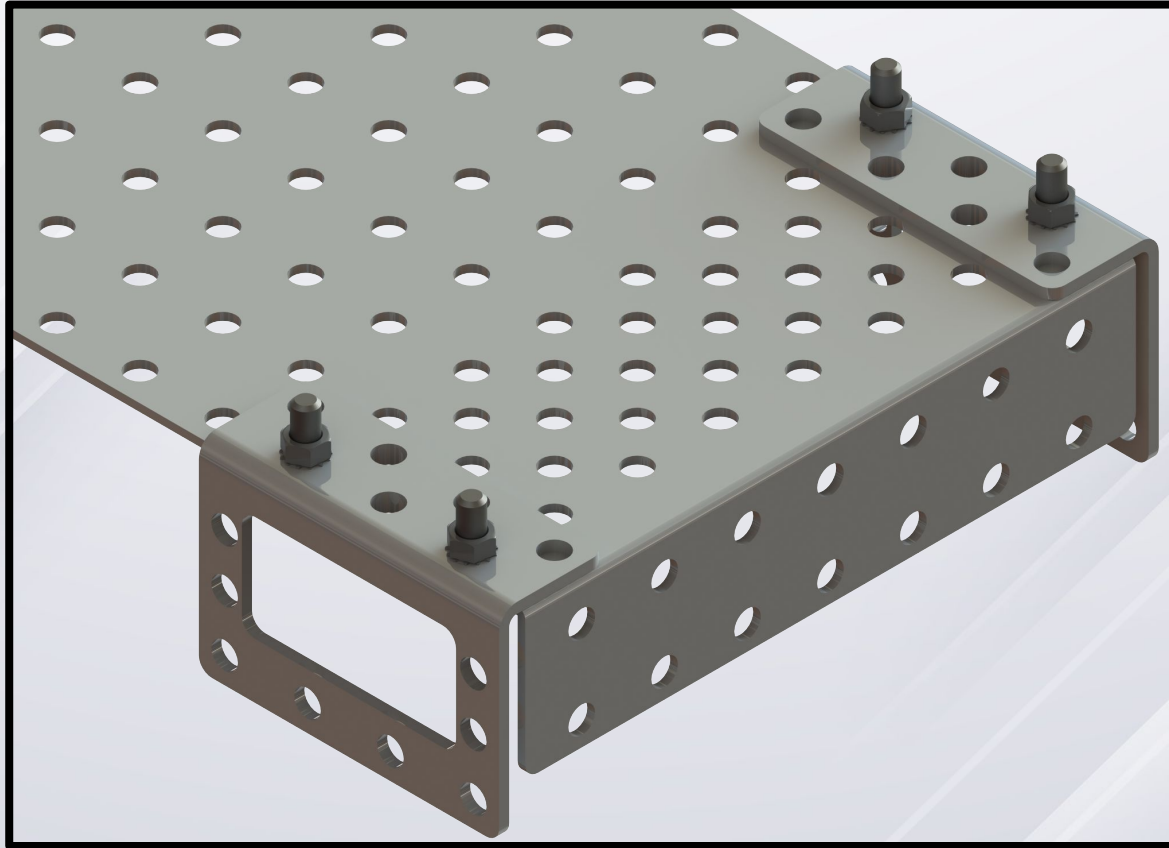
# KIPR Base Mecanum Demobot Build



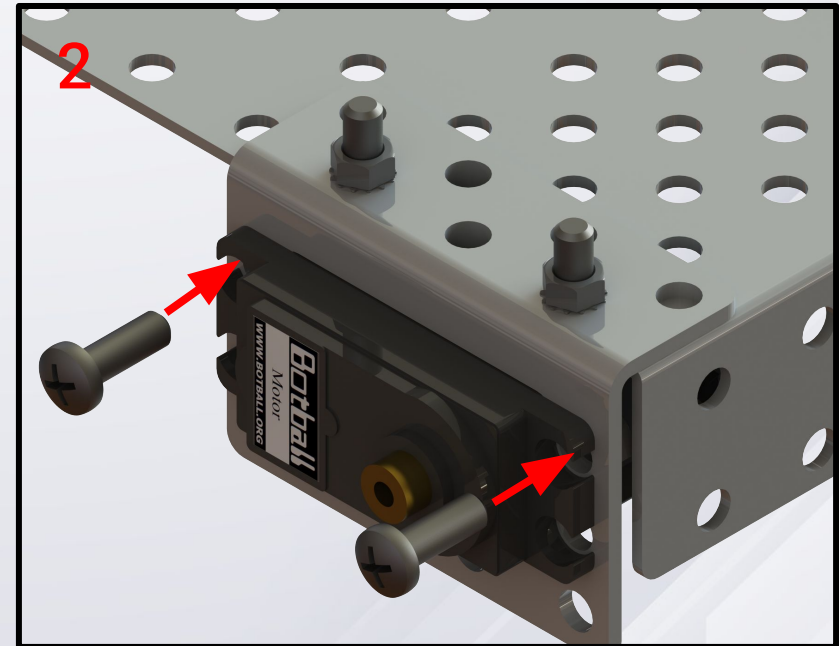
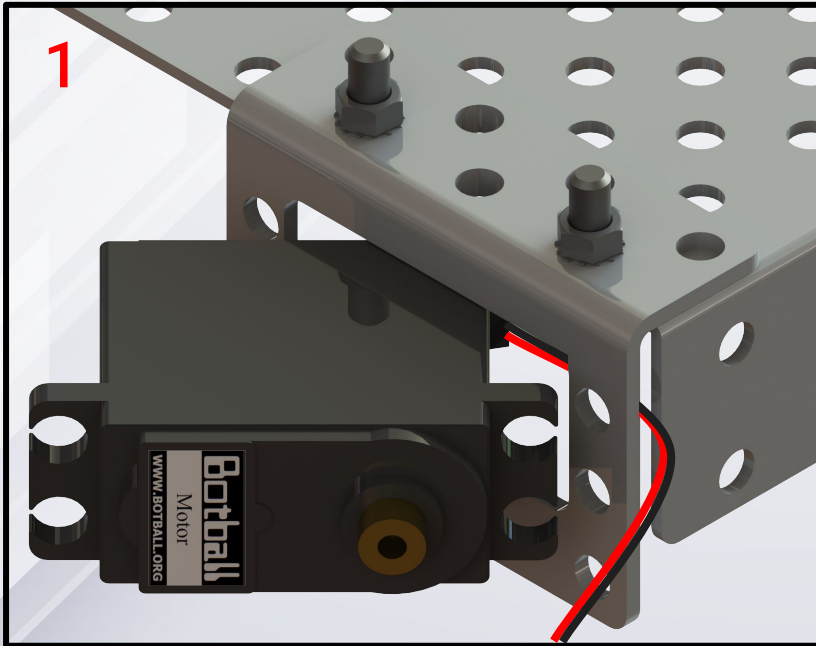
Please follow the slides to complete the assembly of your robot



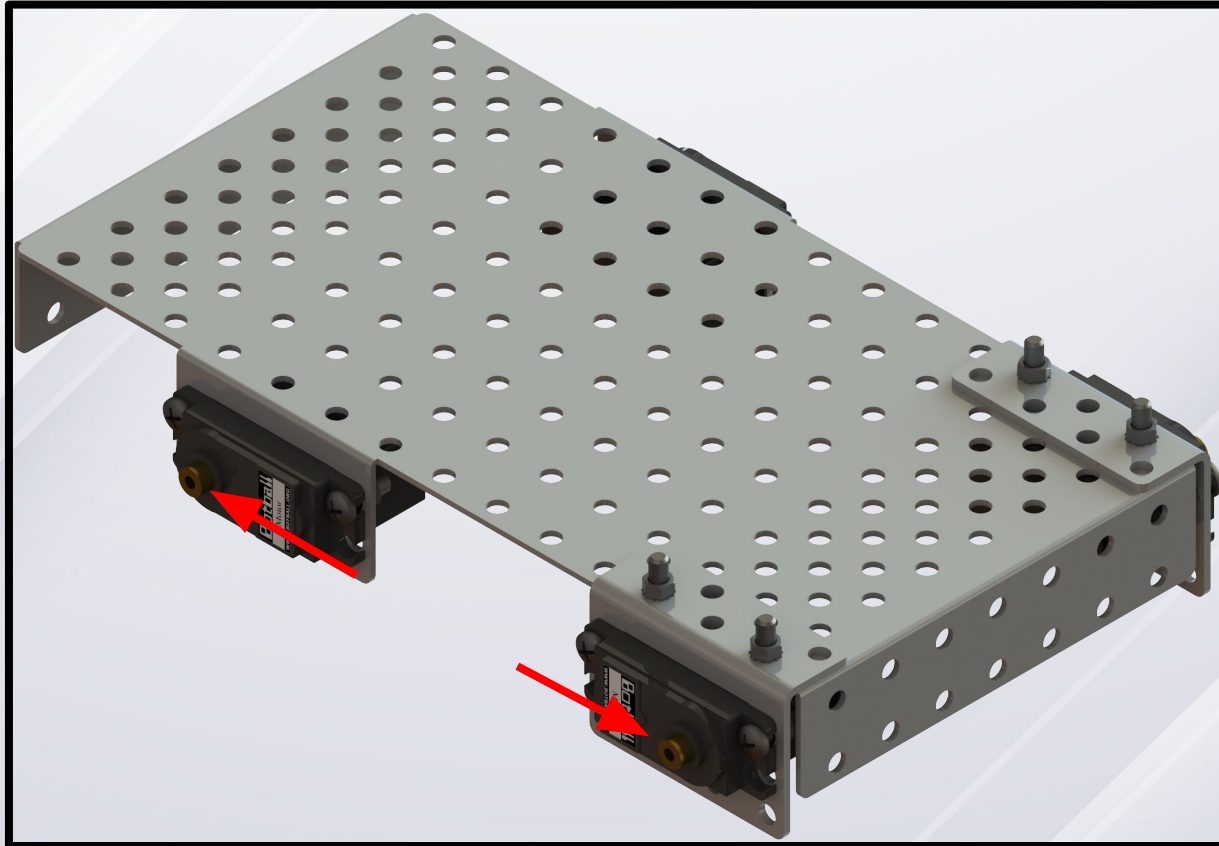
1. Line up a servo bracket on the long end of the chassis as shown.
2. Attach the bracket to the chassis with two medium bolts and two nuts.



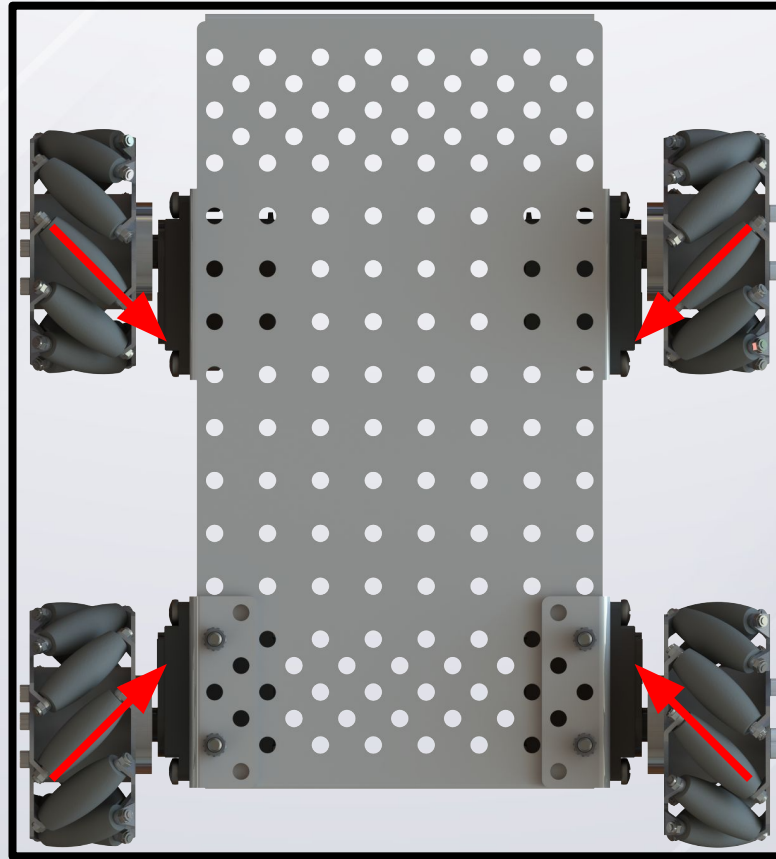
Repeat on other side so that two servo brackets are attached.



1. Line up a motor with the wire end going in first and the spline of the motor on the same side as the long end of the chassis. Pull the wire through the small gap between the bracket and the chassis.
2. Attach the motor to the chassis with two medium bolts and two nuts.



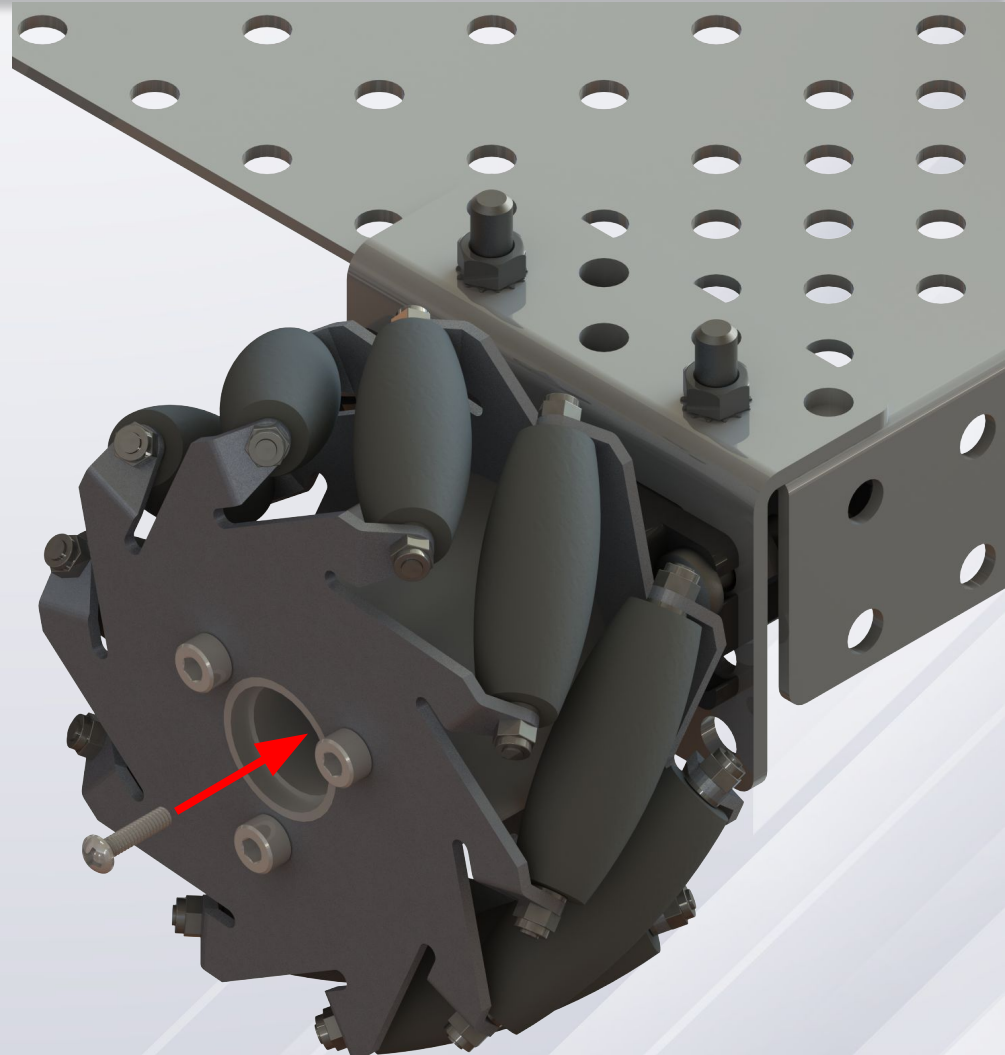
Repeat at all four positions on the brackets and chassis. Make sure the spline of the motor face away from the center of the chassis.

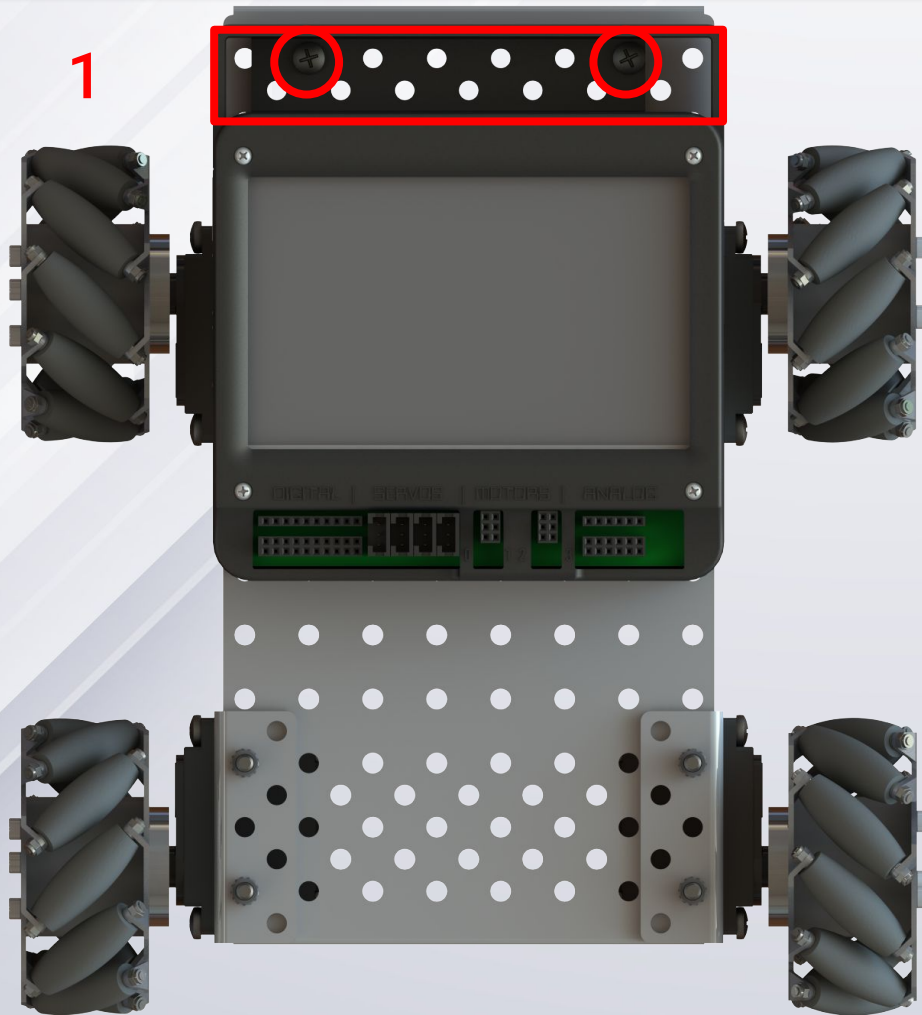


Put the mecanum wheels on your chassis. There are two types of wheels so when putting them on the chassis make sure the diagonal of the small wheels on the mecanum wheels point towards the center of the robot as shown.



1. Using the small silver screws that came with the mecanum wheels, secure the wheels to the motors.
2. Repeat this on all four wheels.





2



1. Line up the holes on the back of the Wombat with the holes on the back end of the chassis and attach using a two small bolts and nuts.
2. Then place the battery in the back on top.



# Base Mecanum Demobot Finished!

