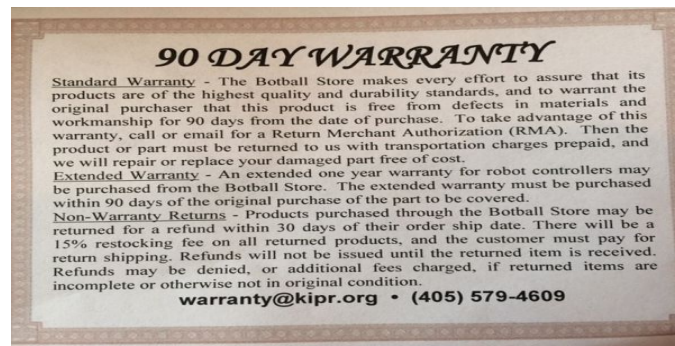




# The KIPR controller has a 90 Day Warranty

Please look in your box for more information  
about the warranty.

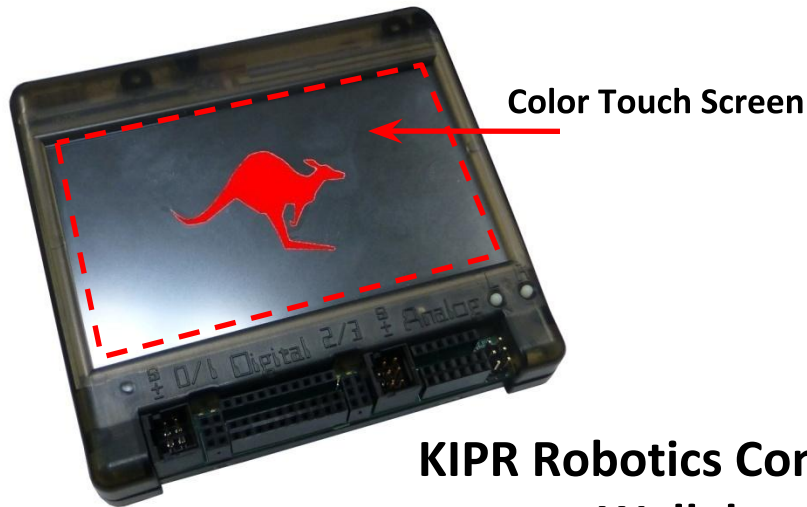


# Charging the Controller's Battery

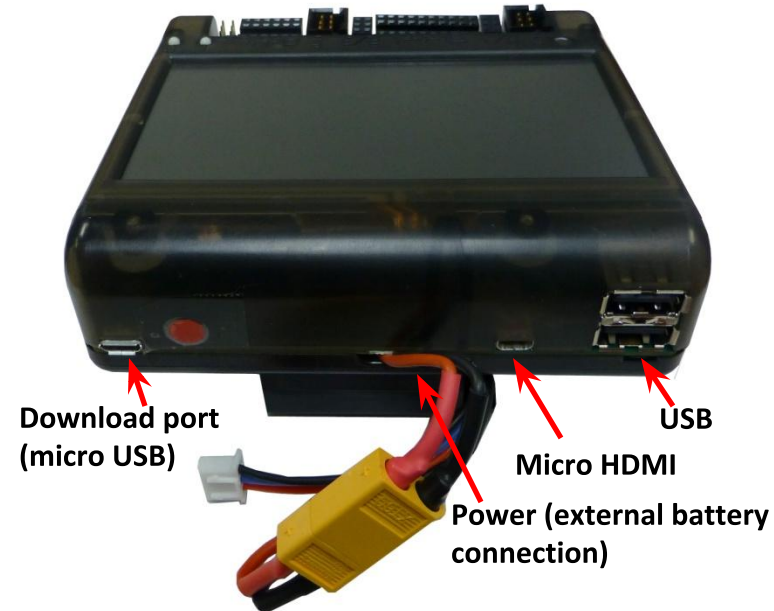
- For charging the controller's battery, **use only the power supply which came with your controller.**
  - It is possible to do damage to the battery from using the wrong charger or from too deep a discharge!
- The standard power pack is a **lithium iron phosphate (LiFe) battery**, a safer alternative to lithium polymer batteries. The safety rules applicable for re-charging any battery still apply:
  - Do **NOT** leave the battery unattended while charging.
  - Turn the Wallaby off or unplug it from the battery while charging.
  - Charge in a cool, open area away from flammable materials.



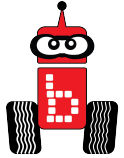
# KRC Controller Guide



**KIPR Robotics Controller  
Wallaby**



# Connecting to your Wallaby



Connecting to your KIPR robot controller Wallaby requires **2** separate steps

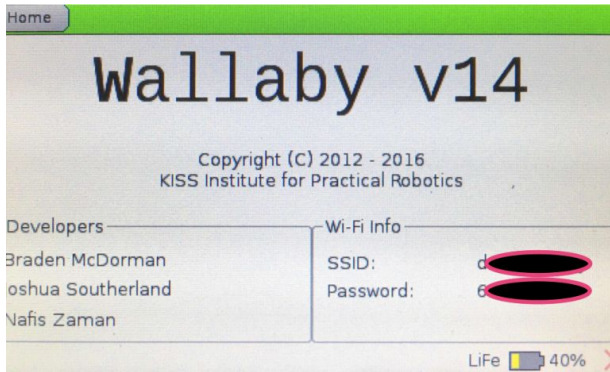
1. Connect your device to the wallaby using either Wifi or USB cable
2. Launch a browser (Chrome, Firefox) on your device and type in the URL

# Connect the Wallaby to your device using WiFi

## STEP 1

1. Connect the **Wallaby** to your Browser device via Wi-Fi
  - This is great at home or School
  - **Not recommended at Workshop or Tournament**

1. Turn on the Wallaby with the **black switch on the side**.



3. To find the number of your wallaby click "about" on your controller.
4. Look at the Wifi info and see the SSID: that is your wallaby number and wallaby password.
5. Go to the your Wi-Fi icon on your computer and click on your wallaby number, and add your password (this may take a few minutes). You will see a blue LED light.

**\*\*\* You may need to take off Wi-Fi preference of selecting your school or another site, so it will not keep reverting to it.**

# Loading the Starting Web Page

## STEP 2

1. Launch your web browser (such as Chrome or Firefox).
2. Copy this IP address into your browser's address bar followed by ":" and port number 8888; e.g.,

192.168.125.1:8888

  
IP address                      Port #

3. The KISS Software Suite will now come up in your browser.
4. You may use a computer, tablet or even a smart phone as long as they have wifi capability.

# Loading the Starting Web Page

## Using the USB Cable

1. Connect your device to the Wallaby with a USB cable.
2. Launch your web browser (such as Chrome or Firefox).
3. Copy this IP address into your browser's address bar followed by ":" and port number 8888; e.g.,

192.168.124.1:8888  
IP address Port #

4. The KISS Software Suite will now come up in your browser.
5. You may use a computer, tablet or even a smart phone as long as they have a USB port or connector to USB (ipads).

# Wallaby Power

- The KIPR Robotics Controller – Wallaby, uses an external battery pack for power.
  - It will void your warranty to use a battery pack with the Wallaby that hasn't been approved by KIPR.
- When your Wallaby is not in use please **be sure to do the following:**
  - TURN YOUR WALLABY OFF
  - UNPLUG THE BATTERY FROM THE WALLABY
    - Leaving your battery plugged in and your Wallaby turned on will drain your battery to the point where it can no longer be charged. If you plug your battery into the charger and the blue lights continue to flash then you have probably drained your battery to the point where it cannot be charged again. If this happens you can call the KIPR office and purchase a replacement - 405-579-4609

# Wallaby Power Down

- From the Software Suite select "Shutdown"
  - Select "Yes"
- From the Wallaby Home Screen press "Shutdown"
  - Select "Yes"
- Go to your Wallaby screen and check to see if it is "halted"
- Slide the power switch to off
- Unplug the battery being careful not to pull on the wires