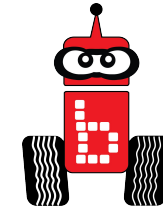


# Kit Overview

- **Key Concepts**
  - Learn and identify robot parts and uses.
- **Pacing**
  - 45 minutes
- **This is an unplugged unit (no computer needed)**

# Table of Contents



[Robot Kit Scavenger Hunt](#)

[Scavenger Hunt](#)

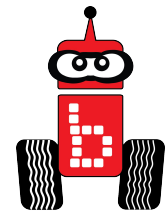
[Introductory Kit Checklist](#)

[Resources - Bot Basics](#)

[Resources - Analog and Digital Sensors](#)

[Resources - Hardware](#)

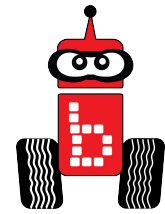
# Kit Overview



## Goals

- Learn the kit components and be able to identify individual parts
- Be able to group parts into categories (KIPR Metal Parts, LEGO, Sensors)
- Distinguish between a motor and a servo motor
- Keep track of parts

# Robot Kit Scavenger Hunt



**Materials:** Interactive board, kit components, printed checklist, and writing utensil

## Preparation

Place all of the kit components out on a table and have the students use:

1. A checklist (something very helpful in engineering) to identify and account for all parts ([checklist](#)).
2. Have the students use a science/engineering/robotics/digital notebook to make their own checklist to account for all parts.

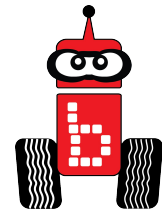
## Resources

The online KIPR store is a good resource to help with the identification of specific kit components.

## TIP

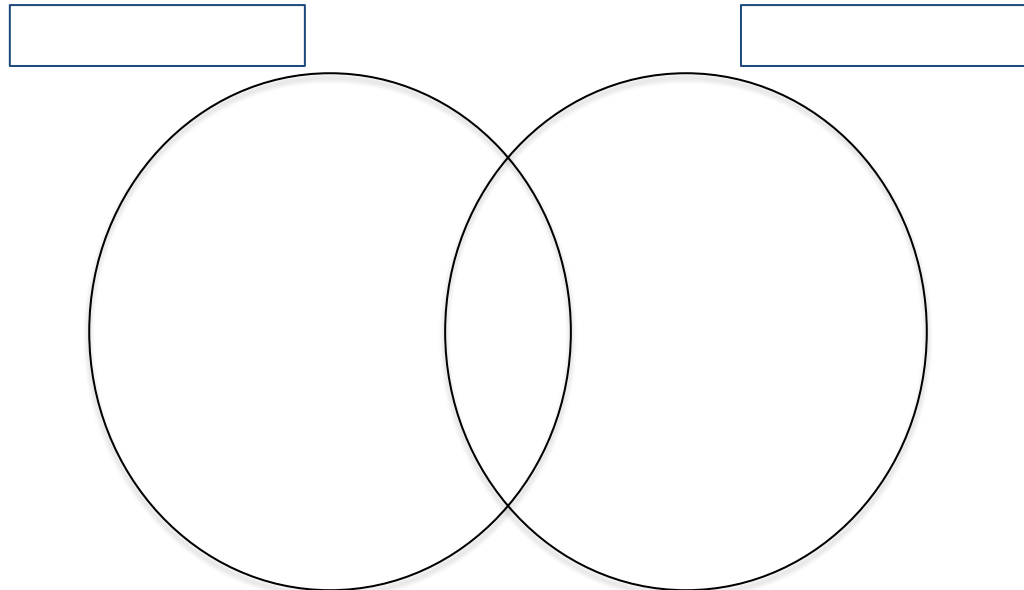
Having a tool box or plastic bins with lids to store kit components is helpful and keeps them from getting lost in the classroom.

# Scavenger Hunt Activity

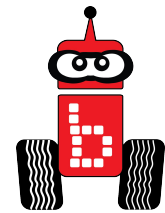


1. Sort and identify all of the robot kit components and use a checklist to make sure you have everything.
2. Generate your own checklist using your notebook and sort and identify all of the robot kit components.
3. Use a Venn diagram to compare and contrast motors and servo motors (or other components in the kit).

Be the expert (Jigsaw)! Each team member must describe and identify a kit component explaining how they identified it until all items have been correctly identified.



# Introductory Kit Checklist



## General Parts

- (1) KIPR Wallaby Controller
- (1) KIPR Wallaby Charger
- (1) KIPR Wallaby Mini USB Cable
- (1) Botball Screwdriver
- (1) 1/4 Wrench
- (2) LEGO Bags
- (2) Motors - SG-5010 Motor
- (2) SG-5010 Servos
- (1) Bag of Screws & Stand-offs
- (1) Bag of Push Rivets

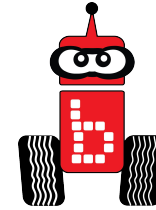
## KIPR Metal Parts

- (1) Metal Ball Caster
- (2) Motor Brackets
- (1) Chassis
- (1) Angle Bracket
- (2) Long Servo Horns

## Sensors

- (1) Light Sensor
- (1) Small Touch
- (1) Large Touch
- (1) Long Lever Sensor
- (1) ET Rangefinder
- (2) Small IR

# Resources - Bot Basics



USB to Micro USB  
(download cable)



Motor

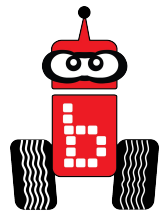


KIPR Wallaby Controller



Servo Motor

# Resources - Analog and Digital Sensors



Large Touch Sensor



"ET"-rangefinder



Small Touch Sensor



Long Lever Sensor



USB Camera



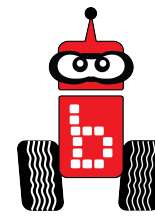
Small IR Reflectance Sensor



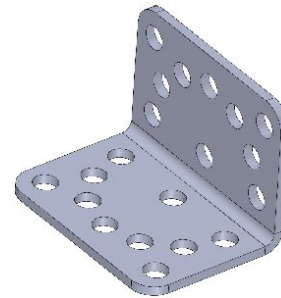
Light Sensor



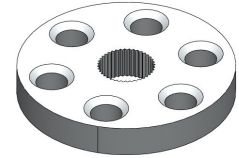
# Resources - Hardware



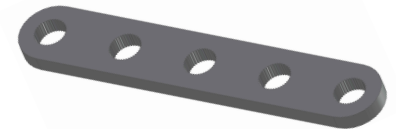
KIPR Metal Part (KMP) Chassis



KMP Angle Bracket

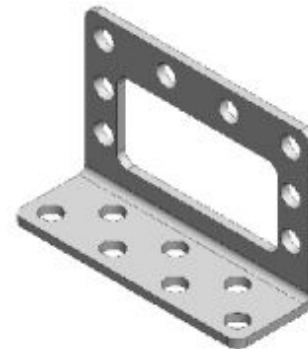


KMP Round Servo Horn-  
(Only Kits prior to 2015)



KMP Long Servo Horn

LEGO Bags



KMP Motor Bracket

# Assessments and Rubrics



Suggestions: *Understanding* rubric and or  
Group collaboration